

USERS MANUAL

MODULO[®] 18'' BOILER PLATFORM



Manufacturer

**POWER CLIMBER B.V.B.A.
Satenrozen 7
B- 2550 Kontich
BELGIUM**

**Website: www.PowerClimber.be
Tel: +32-3-451.05.00
Fax: +32-3-451.05.01
e-mail: Info@PowerClimber.be**

Reference: 38762-US	Issue date: 29-jan-2004	Revision:	Page: 1 of 11
---------------------	-------------------------	-----------	---------------

Contents

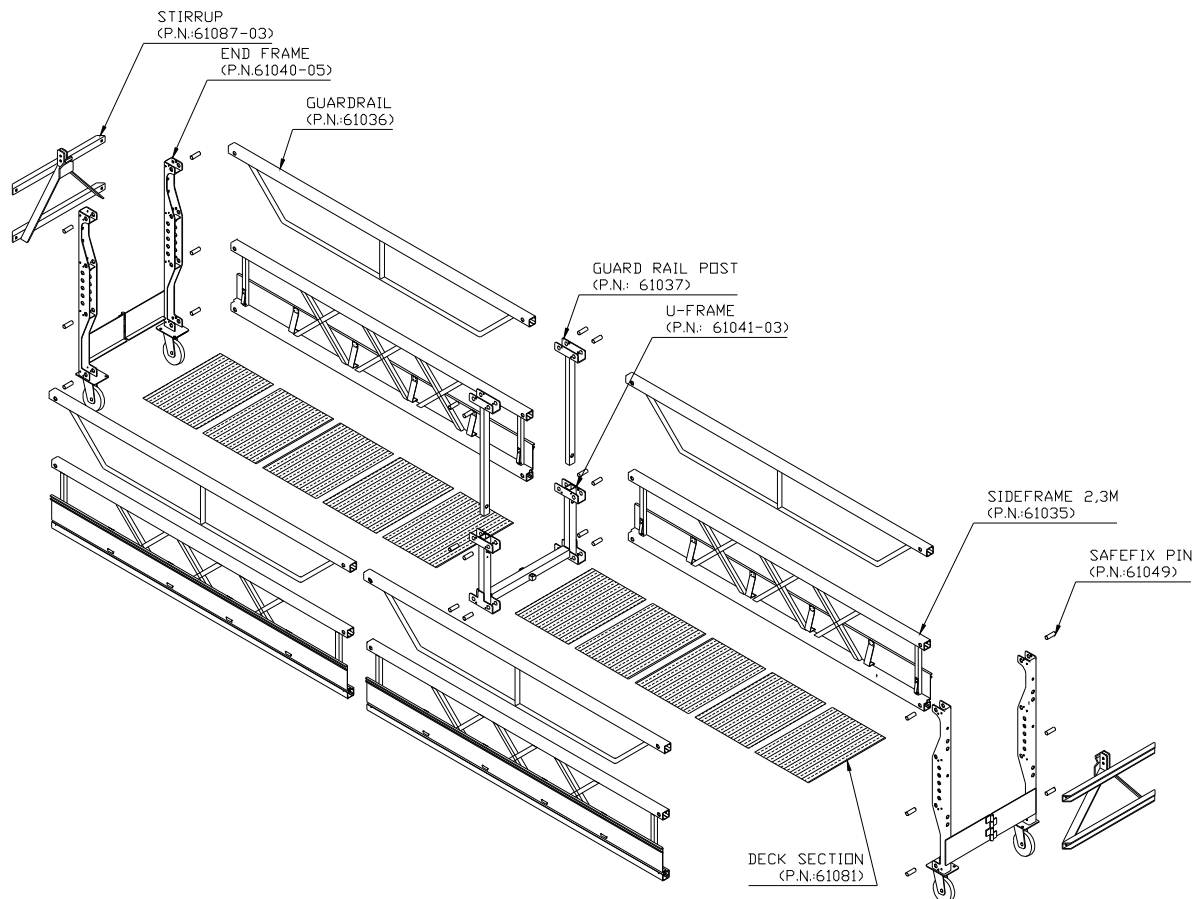
Contents	2
Overview	3
Exploded view of platform with end stirrups	3
View of platform with walk through stirrups (WTS).....	4
Major dimensions	4
Caution	5
Load table platform	6
Platform with end-stirrups	6
Platform with cantilever (3.3ft)	6
Customized sections.....	6
SafeFix pin system	7
Mounting	8
1) Assembling the U-frames and guard rail posts	8
2) U-frames & Side frames:.....	8
3) Assembling End Frame with Stirrup.....	9
4) Floor	9
5) Guard rail	10
6) Wall Rollers.....	10
7) Walk through stirrup	11

Reference: 38762-US	Issue date: 29-jan-2004	Revision:	Page: 2 of 11
---------------------	-------------------------	-----------	---------------

Overview

- The modular design of the MODULO® 18"-BOILER PLATFORM suspended platform allows you to modify the configuration of the standard components to obtain the platform length required. These components are secured together by using the patented SafeFix pin system.
- All components fit through a manhole of dia. 450mm (or 18 inch)

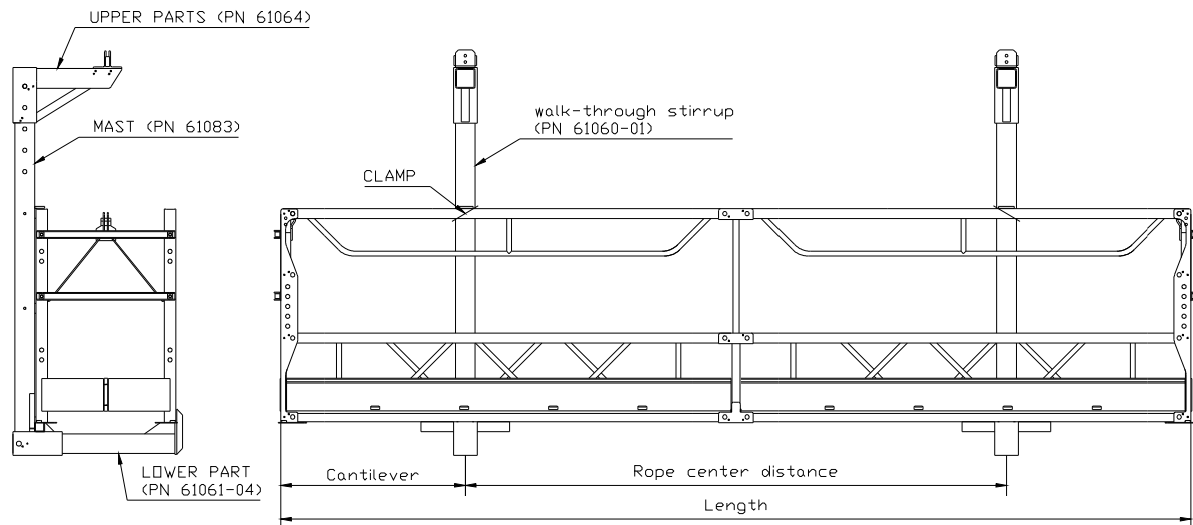
Exploded view of platform with end stirrups



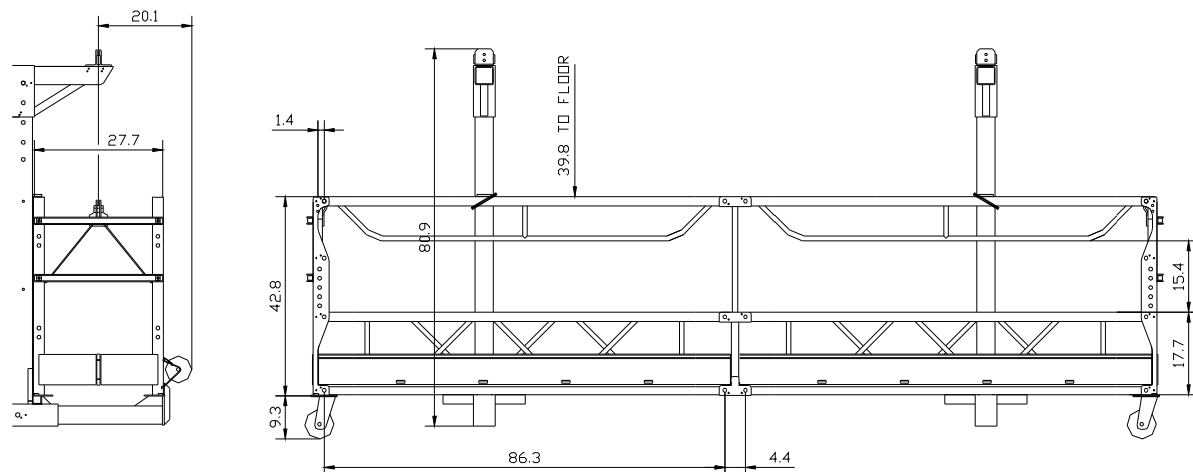
Reference: 38762-US	Issue date: 29-jan-2004	Revision:	Page: 3 of 11
---------------------	-------------------------	-----------	---------------

Overview

View of platform with walk through stirrups (WTS)



Major dimensions



Reference: 38762-US	Issue date: 29-jan-2004	Revision:	Page: 4 of 11
---------------------	-------------------------	-----------	---------------

Check before every use:

1. All pins have to be in horizontal (closed) position.
2. Check the condition of the Safe Fix pins:
 - Pressure in horizontal (closed) position
 - Condition of the spring and spring holder
3. Check condition of all holes in the side frame, U-frame and stirrup.
4. Check the condition of the floor retainers. (4 springs on each deck section)

The cable retainers of the power supply have to be hooked onto the mid rail or cross braces.

Wind restrictions at 12m/s (25mph).

Caution

1. Before using, check all parts for proper function and damage to component parts. Do not use a damaged or improperly functioning platform.
2. A platform exposed to excessive heat, as in the case of fire, should be immediately removed from service and destroyed due to loss of structural strength.
3. Do not permit oil, grease, or slippery material to accumulate on surfaces.
4. Do not use the product if the decking surface is damaged.
5. The total combined weight of each man and all materials should not exceed the rated working load. Do not overload.
6. Erect the platform so that the working or standing surface is level.
7. Support platform ends by stirrups or walk through stirrups per manufacturer's instructions.
8. Use guard rails as required by local, state, and federal regulations, their use is recommended in all cases.
9. Do not allow unstable objects, such as barrels, boxes, loose brick, tools and debris to accumulate on the work surface.
10. Do not use a ladder or other device on a platform to gain greater heights. Never climb onto a stage from a ladder unless the stage and ladder are secured from movement in all directions. Do not apply impact loads to a platform. Never attempt to straighten a deformed side rail or decking member.
11. Do not use acids or other corrosive substances on a plank or platform without consulting the platform manufacturer for specific instructions.
12. Do not use a platform near electrical circuits.
13. Before using, refer to manufacturer's instructions.

Reference: 38762-US	Issue date: 29-jan-2004	Revision:	Page: 5 of 11
---------------------	-------------------------	-----------	---------------

Load table platform

Platform with end-stirrups

Number 7'7"/ 2.3m sections	Span between hoists		Overall length		Rated load <i>Lbs</i>	Selfweight <i>Lbs</i>
	<i>Ft/inch</i>	<i>M</i>	<i>Ft/inch</i>	<i>m</i>		
1	7'5"	2.3	7'11"	2.4	1000	280
2	15'0"	4.6	15'5"	4.7	1000	420
3	22'7"	6.9	23'0"	7.0	1000	565
4	30'1"	9.2	30'7"	9.3	1000	705
5	37'8"	11.5	38'2"	11.6	750	745
6	45'3"	13.8	45'8"	13.9	750	990

Platform with cantilever (3.3ft)

Number 7'7"/ 2.3m sections	Span between hoists		Length of each cantilever		Overall length		Rated load <i>Lbs</i>	Selfweight <i>Lbs</i>
	<i>Ft/inch</i>	<i>M</i>	<i>Ft/inch</i>	<i>M</i>	<i>Ft/inch</i>	<i>M</i>		
2	11'10"	3.6	1'8"	0.5	15'5"	4.7	750	545
3	16'1"	4.9	3'3"	1	23'0"	7.0	1000	685
4	23'7"	7.2	3'3"	1	30'7"	9.3	1000	830
5	31'2"	9.5	3'3"	1	38'7"	11.6	750	970
6	38'8"	11.8	3'3"	1	45'8"	13.9	750	1110
5	27'11"	8.5	4'11"	1.5	38'2"	11.6	750	970
6	35'5"	10.8	4'11"	1.5	45'8"	13.9	750	1110
6	32'2"	9.8	6'7"	2	45'8"	13.9	750	1110

Remark: Other numbers of cantilever and loadings on request.

Customized sections

For special applications, special lengths of Modulo 18" Boiler platform sections are available:

6'1" (1.85m) ,

4'7" (1.40m)

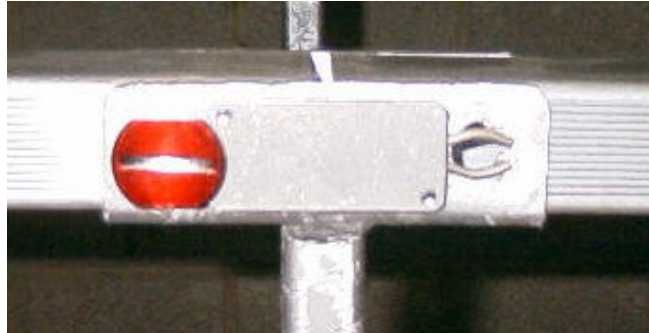
3'1" (0.95m)

For these platforms, the following restrictions apply:

- maximum section length available is standard 2.3m.
- a platform with end-stirrups should not be configured with more than 5 U-frames.
- a platform with walk-through stirrups should not be configured with more than 5 U-frames between the stirrups and not more than 1 U-frame on each cantilever section.
- a platform with either end-stirrups or walk-through stirrups, can be configured with up to two special sections only, and these can only be placed at each end of the platform.
- For special lengths, the length is rounded up to the nearest higher platform length for selection of the rated working load.

Reference: 38762-US	Issue date: 29-jan-2004	Revision:	Page: 6 of 11
---------------------	-------------------------	-----------	---------------

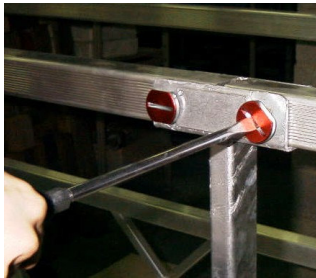
SafeFix pin system



The patented Safe Fix pin system is a one step “insert and snap” method to assemble MODULO® platform components. The slotted pin is fixed in place by a spring mounted on the stirrup or U-frame.

Insertion:

- Line the pin up with the hole, so that the slot at the base of the pin is horizontal.
- Push the pin in from outside until the spring clicks in the grooves on the shaft of the pin. If required, rotate the pin till the slot is horizontal and the springs are in place.
- Make sure the pin is secured.



Removal:

- Rotate the pin ¼ turn till the slot is vertical (and the springs are no longer in the grooves) and pull the pin out.

Note: The pin can be positioned with the use of a hammer and a screwdriver.

ATTENTION: Life span of springs: Springs have to be replaced when they no longer exert pressure on the grooves of the pin shaft.

Reference: 38762-US	Issue date: 29-jan-2004	Revision:	Page: 7 of 11
---------------------	-------------------------	-----------	---------------

Mounting

1) Assembling the U-frames and guard rail posts

An assembled U-frame exists of:

- U-frame
- 2 pins
- 2 guardrail posts

Slide both guard rail posts into the U-frame and lock with Safe Fix pin.

Lock with
Safe Fix
Pin



2) U-frames & Side frames:

Begin assembly by mounting the side frames on the U-frames. Secure each side frame to the U-frame with 2 Safe Fix pins.

Once one U-frame is mounted start with the next U-frame.



Reference: 38762-US	Issue date: 29-jan-2004	Revision:	Page: 8 of 11
---------------------	-------------------------	-----------	---------------

Mounting (cont.)

3) Assembling End Frame with Stirrup

Unfold the end frame
Secure the stirrup to the end frame (with 4 x M12 bolts).
Connect end frame to side frames with 4 Safe Fix Pins.

2 bolts M12
at each side

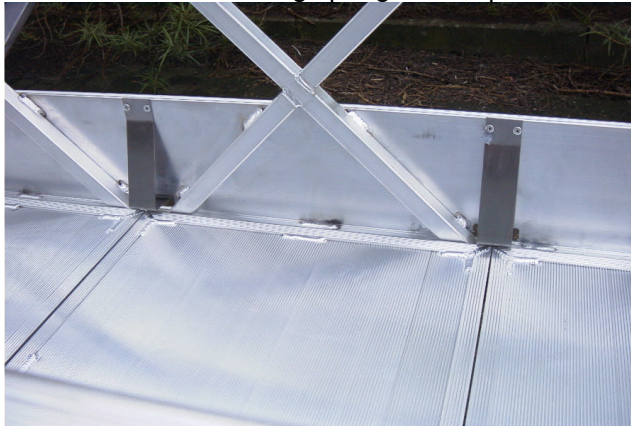


4) Floor

Put in floor (flat side up) as shown.



Check that all 4 retaining springs are in place.



NOTE:

To remove floor, push on the spring and lift floor at the same time.
Five decks are required to cover one section.

Reference: 38762-US	Issue date: 29-jan-2004	Revision:	Page: 9 of 11
---------------------	-------------------------	-----------	---------------

Mounting (cont.)

5) Guard rail

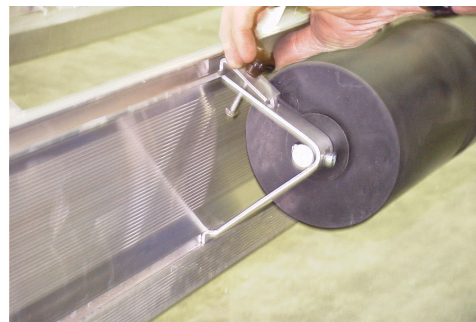
Mount guard rails, inserting 2 Safe Fix pins in each end.



Remarks: Never stand on the guardrail or midrail while platform is in use.

6) Wall Rollers

Loosen screws to insert the wall rollers in the grooves of the side frame. The wall roller can be located anywhere along the length of the side frame as required. Use minimum 2 wall rollers and put them wide apart.



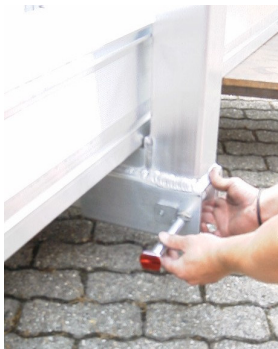
Reference: 38762-US	Issue date: 29-jan-2004	Revision:	Page: 10 of 11
---------------------	-------------------------	-----------	----------------

Mounting (cont.)

7) Walk through stirrup



- Fit the upper part at desired height and lock with Safe Fix pin.
- Hang the mast over the guardrail and screw on the two bolts (do not yet tighten, see below). Make sure that position is in line with the suspension points, otherwise the slack rope safety mechanism will not work properly.
- Fit the lower part into the mast and lock with the second Safe Fix pin.



- Mount the hoist and put the steel wire ropes in the rope guiders.
- When mounting the hoist check the orientation of the hoist.
- Suspend minimum 12 lbs on the suspension rope.
- Suspend minimum 24 lbs on the safety rope.
- Lift the platform a few centimeters and screw the bolts tighter.

Reference: 38762-US	Issue date: 29-jan-2004	Revision:	Page: 11 of 11
---------------------	-------------------------	-----------	----------------