



Collapsible Workcage 700903-1

WORKCAGE DISASSEMBLY SEQUENCE

1. EXTRACT ALL WIRE ROPES AND REMOVE THE HOISTING UNIT.
2. REMOVE TOP HANDRAIL ASSEMBLY.
 - a. PULL FOUR LOCKING PINS.
 - b. LIFT ASSEMBLY VERTICALLY UNTIL IT IS CLEAR OF UPRIGHTS.
 - c. FOLD AND STOW.
3. REMOVE MID HANDRAIL ASSEMBLY.
 - a. PULL FOUR LOCKING PINS.
 - b. LIFT ASSEMBLY VERTICALLY UNTIL IT IS CLEAR OF UPRIGHTS.
 - c. FOLD AND STOW.
4. REMOVE TWO FRONT UPRIGHTS.
 - a. PULL LOCKING PINS.
 - b. LIFT EACH UPRIGHT OUT OF DECK SOCKET.
 - c. STOW.
5. REMOVE DECK END TOEBOARDS.
 - a. LIFT OUT AND STOW.
6. REMOVE FOLDING DECK.
 - a. PULL DECK ASSEMBLY TOWARD FRONT OF UNIT UNTIL LOCKING TABS ARE EXPOSED.
 - b. FOLD DECK IN HALF.
 - c. STOW.
7. REMOVE HOIST SUPPORT BEAM.
 - a. TIP UNIT BACK 90 DEGREES UNTIL MAST IS LAYING ON FLOOR OR GROUND.
 - b. REMOVE TWO LOCKING PINS.
 - c. LIFT BEAM OUT OF CLEVIS.
 - d. STOW.
8. MAIN FRAME IS FULLY EXPOSED.
 - a. PULL THE DECK SUPPORT ARM LOCKING PINS. FOLD BOTH ARMS FLAT AGAINST MAST TUBES.
 - b. COLLAPSE MAST TUBES SO THAT THEY ARE TOGETHER. UNIT IS NOW READY FOR TRANSPORTING.
 - c. STOW.

700902-1/E

Instructions for Collapsible Model Workcage 700903-1

Note: All Warning and Operation Labels should be installed on cage.

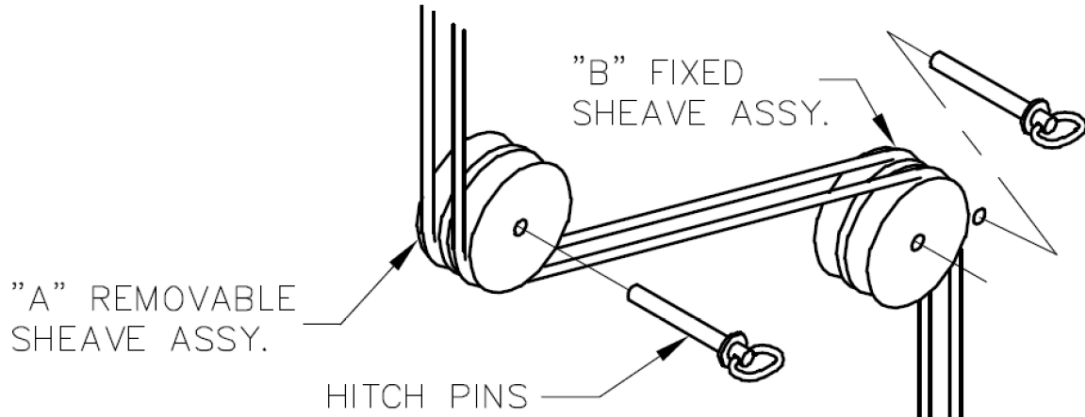
<u>Part #</u>	<u>Description of label</u>
700902-1	Disassembly Sequence
700901-1	Reeving Procedure
700900-1	Load Limit
4351	Sales and Service
4355	Safety First
4356	Caution Hazardous work

Power Climber®
365 Upland Drive
Seattle, WA 98188 USA

Phone: 1-800-560-2546
E-mail: productsupport@safeworks.com
Internet: www.PowerClimber.com

SafeWorks®, LLC
© 2010

THIS DATA SHEET AND ALL REPRODUCTIONS ARE THE PROPERTY OF POWER CLIMBER®. ALL DIMENSIONS AND FIGURES ARE SHOWN FOR GENERAL INFORMATION ONLY AND SHOULD BE CONFIRMED BY POWER CLIMBER® BEFORE BEING USED FOR DESIGN OR CONSTRUCTION PURPOSES. ALL INFORMATION IS SUBJECT TO CHANGE WITHOUT NOTICE. POWER CLIMBER® IS A DIVISION OF SAFEWORKS, @ LLC.



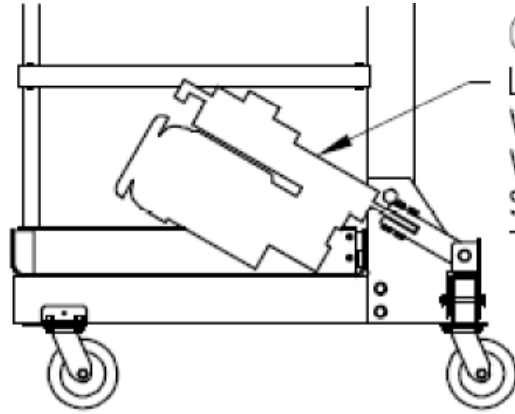
REEVING PROCEDURE

1. DISENGAGE HITCH PINS AND REMOVE SHEAVE ASSEMBLY "A".
2. LAY SUSPENSION AND SECONDARY WIRE ROPES UNDER SHEAVE ASSEMBLY "A" AND OVER FIXED SHEAVE ASSEMBLY "B".
3. MAKE SURE ROPES ARE SEATED PROPERLY IN THE SHEAVE GROOVES. ROPES MUST NOT CROSS OVER EACH OTHER.
4. REINSTALL SHEAVE ASSEMBLY "A" AND HITCH PINS WITH SAFETY PINS.

NOTE: OK TO REEVE ROPES INTO SHEAVES BEFORE OR AFTER REEVING INTO HOIST.

700901-1/D

CAUTION

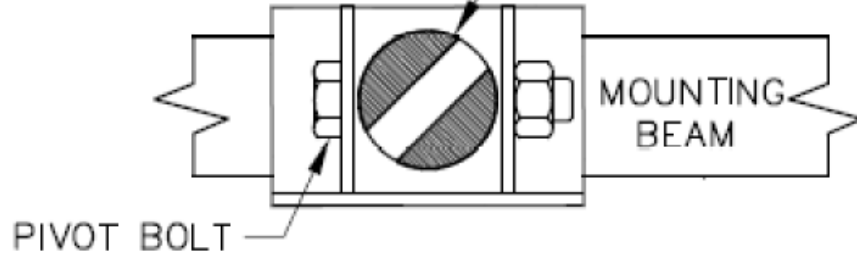


CAUTION!
LAY HOIST ONTO DECK
WHILE MOUNTING TO
WORKCAGE, USE
SUSPENSION ROPE
TO RAISE IT UPRIGHT

DIRECTION OF FRONT
OF WORK DECK

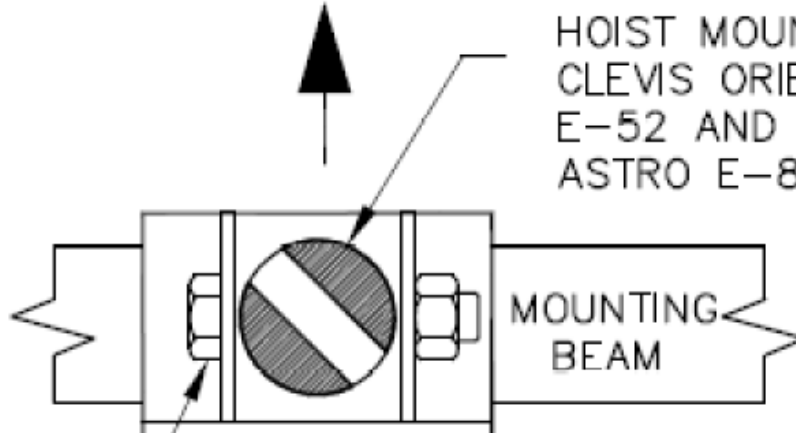


HOIST MOUNTING
CLEVIS ORIENTATION
PC-1, ASTRO E-80,
SC-40, Zmac/1000



PIVOT BOLT

HOIST MOUNTING
CLEVIS ORIENTATION
E-52 AND
ASTRO E-85



PIVOT BOLT